

Ethyl 3-amino-4-[(2-hydroxyethyl)-amino]benzoate

Natarajan Arumugam,^a Aisyah Saad Abdul Rahim,^{a‡} Shafida Abd. Hamid,^b Mohd Mustaqim Rosli^c and Hoong-Kun Fun^{c*§}^aSchool of Pharmaceutical Sciences, Universiti Sains Malaysia, 11800 USM, Penang, Malaysia, ^bKuliyah of Science, International Islamic University Malaysia, Jalan Sultan Ahmad Shah, Bandar Indera Mahkota, 25200 Kuantan, Pahang, Malaysia, and ^cX-ray Crystallography Unit, School of Physics, Universiti Sains Malaysia, 11800 USM, Penang, Malaysia

Correspondence e-mail: hkfun@usm.my

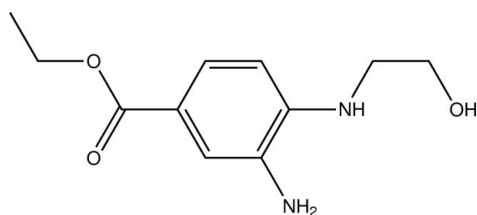
Received 20 July 2010; accepted 21 July 2010

Key indicators: single-crystal X-ray study; $T = 296$ K; mean $\sigma(\text{C}-\text{C}) = 0.002$ Å; R factor = 0.045; wR factor = 0.134; data-to-parameter ratio = 23.1.

In the crystal structure of the title compound, $\text{C}_{11}\text{H}_{16}\text{N}_2\text{O}_3$, molecules are linked by one $\text{O}-\text{H}\cdots\text{N}$ and two $\text{N}-\text{H}\cdots\text{O}$ intermolecular hydrogen bonds into a three-dimensional network, which incorporates $R_2^2(14)$ and $R_2^2(16)$ graph-set motifs.

Related literature

For the biological activity of amino benzoic acid and benzimidazole derivatives, see: Kumar *et al.* (2003); Stefan *et al.* (2002); Pan *et al.* (1999). For related structures, see: Narendra Babu *et al.* (2009); Abdul Rahim *et al.* (2010). For hydrogen-bond motifs, see: Bernstein *et al.* (1995).



Experimental

Crystal data

 $\text{C}_{11}\text{H}_{16}\text{N}_2\text{O}_3$ $M_r = 224.26$ Monoclinic, $C2/c$ $a = 23.2300$ (5) Å $b = 14.5914$ (4) Å $c = 7.5815$ (1) Å $\beta = 108.931$ (1)° $V = 2430.81$ (9) Å³ $Z = 8$ Mo $K\alpha$ radiation $\mu = 0.09$ mm⁻¹ $T = 296$ K $0.55 \times 0.37 \times 0.25$ mm

Data collection

Bruker SMART APEXII CCD
area-detector diffractometer
Absorption correction: multi-scan
(SADABS; Bruker, 2009)
 $T_{\min} = 0.953$, $T_{\max} = 0.978$ 26584 measured reflections
3739 independent reflections
2597 reflections with $I > 2\sigma(I)$
 $R_{\text{int}} = 0.035$

Refinement

 $R[F^2 > 2\sigma(F^2)] = 0.045$
 $wR(F^2) = 0.134$
 $S = 1.02$
3739 reflections
162 parametersH atoms treated by a mixture of
independent and constrained
refinement
 $\Delta\rho_{\text{max}} = 0.16$ e Å⁻³
 $\Delta\rho_{\text{min}} = -0.21$ e Å⁻³

Table 1

Hydrogen-bond geometry (Å, °).

$D-\text{H}\cdots A$	$D-\text{H}$	$\text{H}\cdots A$	$D\cdots A$	$D-\text{H}\cdots A$
$\text{O1}-\text{H1O1}\cdots\text{N2}^{\text{i}}$	0.846 (15)	2.017 (15)	2.8628 (14)	178.4 (14)
$\text{N2}-\text{H1N2}\cdots\text{O3}^{\text{ii}}$	0.880 (19)	2.145 (19)	3.0083 (16)	167.0 (13)
$\text{N2}-\text{H2N2}\cdots\text{O1}^{\text{iii}}$	0.907 (15)	2.113 (15)	2.9800 (14)	159.7 (13)

Symmetry codes: (i) $-x, y, -z - \frac{1}{2}$; (ii) $-x + \frac{1}{2}, -y + \frac{1}{2}, -z$; (iii) $-x, -y, -z$.

Data collection: *APEX2* (Bruker, 2009); cell refinement: *SAINT* (Bruker, 2009); data reduction: *SAINT*; program(s) used to solve structure: *SHELXTL* (Sheldrick, 2008); program(s) used to refine structure: *SHELXTL*; molecular graphics: *SHELXTL*; software used to prepare material for publication: *SHELXTL* and *PLATON* (Spek, 2009).

NA, ASAR and SAH gratefully acknowledge the Ministry of Science, Technology and Innovations (MOSTI) Grant 304/PFARMASI/650512/I121 and the FRGS Grant (FRGS0510-119) for funding the synthetic chemistry work. NA thanks Universiti Sains Malaysia for the award of postdoctoral fellowship. HKF and MMR thank Universiti Sains Malaysia (USM) for the Research University Golden Goose Grant (1001/PFIZIK/811012).

Supplementary data and figures for this paper are available from the IUCr electronic archives (Reference: LH5088).

References

- Abdul Rahim, A. S., Abd Hamid, S., Narendra Babu, S. N., Loh, W.-S. & Fun, H.-K. (2010). *Acta Cryst.* **E66**, o846–o847.
Bernstein, J., Davis, R. E., Shimoni, L. & Chang, N.-L. (1995). *Angew. Chem. Int. Ed. Engl.* **34**, 1555–1573.
Bruker (2009). *APEX2*, *SAINT* and *SADABS*. Bruker AXS Inc., Madison, Wisconsin, USA.
Kumar, A., Bansal, D., Bajaj, K., Sharma, S., Archana & Srivastava, V. K. (2003). *Bioorg. Med. Chem.* **11**, 5281–5291.
Narendra Babu, S. N., Abdul Rahim, A. S., Abd Hamid, S., Balasubramani, K. & Fun, H.-K. (2009). *Acta Cryst.* **E65**, o2070–o2071.
Pan, P. C. & Sun, C. M. (1999). *Tetrahedron Lett.* **40**, 6443–6446.
Sheldrick, G. M. (2008). *Acta Cryst.* **A64**, 112–122.
Spek, A. L. (2009). *Acta Cryst.* **D65**, 148–155.
Stefan, B., Carmen, G. & Kerstin, K. (2002). *Bioorg. Med. Chem.* **10**, 2415–2437.

‡ Additional correspondence author, e-mail: aisyah@usm.my.

§ Thomson Reuters ResearcherID: A-3561-2009.

supplementary materials

Acta Cryst. (2010). E66, o2141 [doi:10.1107/S1600536810029077]

Ethyl 3-amino-4-[(2-hydroxyethyl)amino]benzoate

N. Arumugam, A. S. Abdul Rahim, S. Abd. Hamid, M. M. Rosli and H.-K. Fun

Comment

Amino benzoic acid derivatives are important intermediates for the synthesis of various heterocyclic compounds of pharmacological interests (Kumar *et al.*, 2003). The synthesis of novel benzimidazole derivatives such as 2-aminomethyl benzimidazoles (Stefan *et al.*, 2002) and oxobenzimidazoles (Pan *et al.*, 1999) are commonly accessed *via* aminobenzoic acid derivatives. As part of an ongoing study on such compounds, we present the crystal structure of the title compound (I), which was an intermediate in a synthesis.

In the title molecule (Fig. 1), the bond lengths and angles are within normal ranges and are similar to those in related structures (Narendra Babu *et al.*, 2009; Abdul Rahim *et al.*, 2010). The benzoate group is essentially planar with a maximum deviation of -0.006 (1) for atom C4.

In the crystal structure, molecules are linked by intermolecular N2—H1N2...O3ⁱⁱ, N2—H2N2...O1ⁱⁱⁱ and O1—H1O1...N2ⁱ hydrogen bonds (see Table 1 for symmetry codes) into a three-dimensional network with R₂²(14) and R₂²(16) graph-set motifs (Bernstein *et al.*, 1995).

Experimental

Ethyl 4-(2-hydroxyethylamino)-3-nitro-benzoate (0.5 g, 1.96 mmol), ammonium formate (0.4 g, 6.8 mmol) and palladium on carbon (250 mg) were mixed in ethanol. The reaction mixture was irradiated under microwave conditions at 373K for 2 minutes. After completion, the reaction mixture was filtered through celite and the filtrate was concentrated under reduced pressure to yield the crude product. The product was recrystallised from EtOAc to afford the title compound as colourless crystals.

Refinement

N-bound and O-bound H atoms were located from a difference Fourier map and refined isotropically. The remaining H atoms were positioned geometrically [C-H = 0.93, 0.96 or 0.97 Å] and were refined using a riding model, with U_{iso}(H) = xU_{eq}(C), where x = 1.5 for methyl and 1.2 for all other atoms. A rotating model was used for the methyl group.

Figures

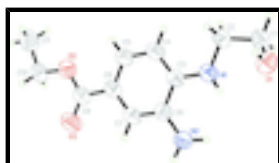


Fig. 1. The molecular structure, showing 50% probability displacement ellipsoids and the atom-numbering scheme. Hydrogen atoms are shown as spheres of arbitrary radius.

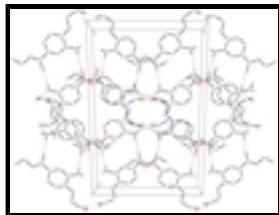


Fig. 2. The crystal packing of (I) viewed along the *c* axis. Dashed lines indicate hydrogen bonds. H atoms not involved in the hydrogen bond interactions have been omitted for clarity.

Ethyl 3-amino-4-[(2-hydroxyethyl)amino]benzoate

Crystal data

$C_{11}H_{16}N_2O_3$	$F(000) = 960$
$M_r = 224.26$	$D_x = 1.226 \text{ Mg m}^{-3}$
Monoclinic, $C2/c$	Mo $K\alpha$ radiation, $\lambda = 0.71073 \text{ \AA}$
Hall symbol: $-C 2yc$	Cell parameters from 8941 reflections
$a = 23.2300 (5) \text{ \AA}$	$\theta = 2.8\text{--}30.6^\circ$
$b = 14.5914 (4) \text{ \AA}$	$\mu = 0.09 \text{ mm}^{-1}$
$c = 7.5815 (1) \text{ \AA}$	$T = 296 \text{ K}$
$\beta = 108.931 (1)^\circ$	Block, colourless
$V = 2430.81 (9) \text{ \AA}^3$	$0.55 \times 0.37 \times 0.25 \text{ mm}$
$Z = 8$	

Data collection

Bruker SMART APEXII CCD area-detector diffractometer	3739 independent reflections
Radiation source: fine-focus sealed tube graphite	2597 reflections with $I > 2\sigma(I)$
φ and ω scans	$R_{\text{int}} = 0.035$
Absorption correction: multi-scan (<i>SADABS</i> ; Bruker, 2009)	$\theta_{\text{max}} = 30.6^\circ$, $\theta_{\text{min}} = 1.7^\circ$
$T_{\text{min}} = 0.953$, $T_{\text{max}} = 0.978$	$h = -32 \rightarrow 33$
26584 measured reflections	$k = -20 \rightarrow 20$
	$l = -10 \rightarrow 10$

Refinement

Refinement on F^2	Primary atom site location: structure-invariant direct methods
Least-squares matrix: full	Secondary atom site location: difference Fourier map
$R[F^2 > 2\sigma(F^2)] = 0.045$	Hydrogen site location: inferred from neighbouring sites
$wR(F^2) = 0.134$	H atoms treated by a mixture of independent and constrained refinement
$S = 1.02$	$w = 1/[\sigma^2(F_o^2) + (0.0626P)^2 + 0.4393P]$
3739 reflections	where $P = (F_o^2 + 2F_c^2)/3$
162 parameters	$(\Delta/\sigma)_{\text{max}} < 0.001$
	$\Delta\rho_{\text{max}} = 0.16 \text{ e \AA}^{-3}$

0 restraints

$$\Delta\rho_{\min} = -0.21 \text{ e } \text{\AA}^{-3}$$

Special details

Geometry. All esds (except the esd in the dihedral angle between two l.s. planes) are estimated using the full covariance matrix. The cell esds are taken into account individually in the estimation of esds in distances, angles and torsion angles; correlations between esds in cell parameters are only used when they are defined by crystal symmetry. An approximate (isotropic) treatment of cell esds is used for estimating esds involving l.s. planes.

Refinement. Refinement of F^2 against ALL reflections. The weighted R-factor wR and goodness of fit S are based on F^2 , conventional R-factors R are based on F, with F set to zero for negative F^2 . The threshold expression of $F^2 > 2\text{sigma}(F^2)$ is used only for calculating R-factors(gt) etc. and is not relevant to the choice of reflections for refinement. R-factors based on F^2 are statistically about twice as large as those based on F, and R- factors based on ALL data will be even larger.

Fractional atomic coordinates and isotropic or equivalent isotropic displacement parameters (\AA^2)

	x	y	z	$U_{\text{iso}}^*/U_{\text{eq}}$
O1	-0.07544 (4)	0.04108 (6)	-0.13906 (13)	0.0595 (2)
O2	0.17663 (4)	0.52426 (6)	0.03582 (14)	0.0667 (3)
O3	0.24606 (4)	0.41940 (7)	0.03351 (18)	0.0826 (3)
N1	0.01804 (4)	0.17082 (8)	0.01775 (14)	0.0544 (2)
N2	0.13085 (5)	0.11676 (7)	0.00330 (14)	0.0540 (2)
C1	-0.07977 (6)	0.10608 (9)	-0.00450 (17)	0.0581 (3)
H1A	-0.0643	0.0789	0.1186	0.070*
H1B	-0.1223	0.1212	-0.0277	0.070*
C2	-0.04490 (5)	0.19272 (8)	-0.00811 (16)	0.0521 (3)
H2A	-0.0627	0.2237	-0.1266	0.063*
H2B	-0.0472	0.2336	0.0903	0.063*
C3	0.05994 (5)	0.23731 (8)	0.01945 (15)	0.0490 (3)
C4	0.04734 (5)	0.33047 (8)	0.02461 (19)	0.0600 (3)
H4A	0.0091	0.3487	0.0258	0.072*
C5	0.09038 (6)	0.39616 (9)	0.0280 (2)	0.0623 (3)
H5A	0.0809	0.4579	0.0308	0.075*
C6	0.14783 (5)	0.37052 (8)	0.02717 (16)	0.0539 (3)
C7	0.16117 (5)	0.27727 (8)	0.02449 (15)	0.0518 (3)
H7A	0.1997	0.2597	0.0254	0.062*
C8	0.11884 (5)	0.21078 (8)	0.02050 (14)	0.0479 (2)
C9	0.19533 (5)	0.43832 (9)	0.03180 (17)	0.0575 (3)
C10	0.21965 (6)	0.59737 (9)	0.0476 (2)	0.0668 (3)
H10A	0.2336	0.5963	-0.0598	0.080*
H10B	0.2546	0.5910	0.1595	0.080*
C11	0.18689 (8)	0.68429 (11)	0.0526 (3)	0.0838 (5)
H11A	0.2149	0.7347	0.0733	0.126*
H11B	0.1697	0.6817	0.1519	0.126*
H11C	0.1550	0.6926	-0.0640	0.126*
H1O1	-0.0924 (7)	0.0638 (11)	-0.246 (2)	0.075 (4)*
H1N1	0.0238 (6)	0.1165 (11)	-0.0138 (19)	0.065 (4)*
H1N2	0.1691 (8)	0.1076 (10)	0.012 (2)	0.072 (4)*

supplementary materials

H2N2 0.1176 (7) 0.0761 (10) 0.072 (2) 0.071 (4)*

Atomic displacement parameters (\AA^2)

	U^{11}	U^{22}	U^{33}	U^{12}	U^{13}	U^{23}
O1	0.0687 (5)	0.0560 (5)	0.0529 (5)	0.0008 (4)	0.0184 (4)	0.0009 (4)
O2	0.0536 (5)	0.0594 (5)	0.0905 (7)	-0.0071 (4)	0.0280 (4)	-0.0010 (4)
O3	0.0551 (5)	0.0787 (7)	0.1247 (9)	-0.0041 (4)	0.0441 (5)	-0.0072 (6)
N1	0.0481 (5)	0.0538 (6)	0.0645 (6)	-0.0011 (4)	0.0226 (4)	-0.0009 (4)
N2	0.0508 (5)	0.0569 (6)	0.0567 (6)	0.0036 (4)	0.0210 (4)	-0.0002 (4)
C1	0.0572 (6)	0.0655 (7)	0.0577 (7)	-0.0079 (5)	0.0270 (5)	-0.0043 (5)
C2	0.0481 (6)	0.0587 (6)	0.0534 (6)	-0.0015 (5)	0.0218 (5)	-0.0029 (5)
C3	0.0452 (5)	0.0574 (6)	0.0461 (5)	-0.0014 (4)	0.0172 (4)	-0.0015 (4)
C4	0.0462 (6)	0.0590 (7)	0.0794 (8)	0.0021 (5)	0.0266 (6)	-0.0004 (6)
C5	0.0533 (6)	0.0541 (7)	0.0839 (8)	0.0020 (5)	0.0285 (6)	-0.0005 (6)
C6	0.0475 (6)	0.0594 (7)	0.0575 (6)	-0.0028 (5)	0.0207 (5)	-0.0018 (5)
C7	0.0436 (5)	0.0638 (7)	0.0501 (6)	0.0018 (5)	0.0180 (4)	-0.0015 (5)
C8	0.0474 (5)	0.0561 (6)	0.0411 (5)	0.0021 (4)	0.0154 (4)	-0.0011 (4)
C9	0.0510 (6)	0.0643 (7)	0.0600 (7)	-0.0028 (5)	0.0219 (5)	-0.0024 (5)
C10	0.0603 (7)	0.0693 (8)	0.0737 (8)	-0.0151 (6)	0.0257 (6)	-0.0026 (6)
C11	0.0976 (11)	0.0696 (9)	0.0974 (12)	-0.0124 (8)	0.0499 (9)	-0.0071 (8)

Geometric parameters (\AA , $^\circ$)

O1—C1	1.4203 (15)	C3—C4	1.3938 (17)
O1—H1O1	0.844 (17)	C3—C8	1.4194 (15)
O2—C9	1.3306 (16)	C4—C5	1.3792 (17)
O2—C10	1.4447 (15)	C4—H4A	0.9300
O3—C9	1.2065 (15)	C5—C6	1.3880 (16)
N1—C3	1.3714 (14)	C5—H5A	0.9300
N1—C2	1.4465 (14)	C6—C7	1.3972 (18)
N1—H1N1	0.851 (15)	C6—C9	1.4738 (17)
N2—C8	1.4144 (15)	C7—C8	1.3747 (16)
N2—H1N2	0.880 (17)	C7—H7A	0.9300
N2—H2N2	0.907 (16)	C10—C11	1.486 (2)
C1—C2	1.5064 (17)	C10—H10A	0.9700
C1—H1A	0.9700	C10—H10B	0.9700
C1—H1B	0.9700	C11—H11A	0.9600
C2—H2A	0.9700	C11—H11B	0.9600
C2—H2B	0.9700	C11—H11C	0.9600
C1—O1—H1O1	107.8 (11)	C4—C5—H5A	119.8
C9—O2—C10	118.22 (10)	C6—C5—H5A	119.8
C3—N1—C2	121.87 (10)	C5—C6—C7	118.72 (11)
C3—N1—H1N1	119.1 (10)	C5—C6—C9	122.18 (11)
C2—N1—H1N1	114.3 (10)	C7—C6—C9	119.10 (10)
C8—N2—H1N2	111.4 (10)	C8—C7—C6	121.82 (10)
C8—N2—H2N2	117.9 (9)	C8—C7—H7A	119.1
H1N2—N2—H2N2	112.2 (13)	C6—C7—H7A	119.1

O1—C1—C2	112.55 (9)	C7—C8—N2	121.69 (10)
O1—C1—H1A	109.1	C7—C8—C3	119.27 (10)
C2—C1—H1A	109.1	N2—C8—C3	118.86 (10)
O1—C1—H1B	109.1	O3—C9—O2	122.72 (12)
C2—C1—H1B	109.1	O3—C9—C6	124.60 (12)
H1A—C1—H1B	107.8	O2—C9—C6	112.68 (10)
N1—C2—C1	109.76 (10)	O2—C10—C11	106.38 (11)
N1—C2—H2A	109.7	O2—C10—H10A	110.5
C1—C2—H2A	109.7	C11—C10—H10A	110.5
N1—C2—H2B	109.7	O2—C10—H10B	110.5
C1—C2—H2B	109.7	C11—C10—H10B	110.5
H2A—C2—H2B	108.2	H10A—C10—H10B	108.6
N1—C3—C4	122.37 (10)	C10—C11—H11A	109.5
N1—C3—C8	119.14 (10)	C10—C11—H11B	109.5
C4—C3—C8	118.47 (10)	H11A—C11—H11B	109.5
C5—C4—C3	121.38 (11)	C10—C11—H11C	109.5
C5—C4—H4A	119.3	H11A—C11—H11C	109.5
C3—C4—H4A	119.3	H11B—C11—H11C	109.5
C4—C5—C6	120.33 (11)		
C3—N1—C2—C1	179.71 (10)	C6—C7—C8—C3	-0.13 (16)
O1—C1—C2—N1	-56.17 (13)	N1—C3—C8—C7	-179.22 (10)
C2—N1—C3—C4	9.84 (17)	C4—C3—C8—C7	-0.70 (16)
C2—N1—C3—C8	-171.70 (10)	N1—C3—C8—N2	5.47 (15)
N1—C3—C4—C5	179.39 (12)	C4—C3—C8—N2	-176.01 (10)
C8—C3—C4—C5	0.93 (18)	C10—O2—C9—O3	-1.65 (19)
C3—C4—C5—C6	-0.3 (2)	C10—O2—C9—C6	177.74 (10)
C4—C5—C6—C7	-0.54 (19)	C5—C6—C9—O3	179.09 (13)
C4—C5—C6—C9	-179.63 (12)	C7—C6—C9—O3	0.0 (2)
C5—C6—C7—C8	0.76 (17)	C5—C6—C9—O2	-0.29 (17)
C9—C6—C7—C8	179.87 (10)	C7—C6—C9—O2	-179.38 (10)
C6—C7—C8—N2	175.04 (10)	C9—O2—C10—C11	-179.15 (12)

Hydrogen-bond geometry (\AA , $^\circ$)

$D-H\cdots A$	$D-H$	$H\cdots A$	$D\cdots A$	$D-H\cdots A$
O1—H1O1 \cdots N2 ⁱ	0.846 (15)	2.017 (15)	2.8628 (14)	178.4 (14)
N2—H1N2 \cdots O3 ⁱⁱ	0.880 (19)	2.145 (19)	3.0083 (16)	167.0 (13)
N2—H2N2 \cdots O1 ⁱⁱⁱ	0.907 (15)	2.113 (15)	2.9800 (14)	159.7 (13)

Symmetry codes: (i) $-x, y, -z-1/2$; (ii) $-x+1/2, -y+1/2, -z$; (iii) $-x, -y, -z$.

Fig. 1

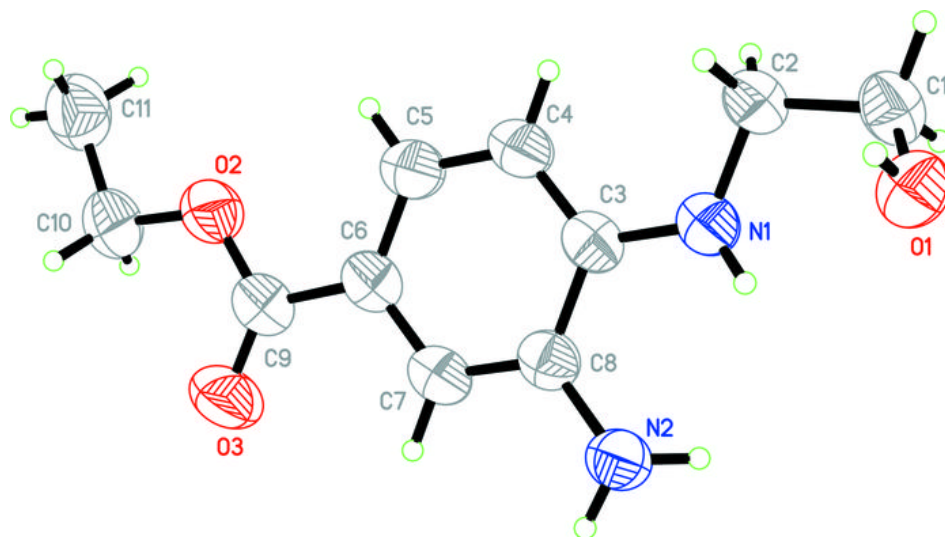


Fig. 2

